

P-410

USE MANUAL

ADVANCED
SOLUTIONS



SAFETY RULES AND CAUTIONS

- The plug must be removed from the socket-outlet before cleaning or maintaining the appliance and after use.
- The appliance shall not be left unattended while it is connected to the supply mains.
- Do not use the machine without the lower drum.
- Do not fill the boiler tank with detergent or disinfecting products. (use only water).
- Do not turn the device upside down (the solenoid valve may get clogged).
- Do not suck flammable materials, explosives, concrete, ash, gypsum or any other material which might create a dangerous mixture.
- If corrosive substances are sucked, the lower drum might be damaged. We recommend emptying and rinsing it well.
- Make sure the surfaces and the parts to be cleaned can withstand the steam (at the beginning we recommend using the steam on small surfaces).
- Do not use steam on velvet, satin and leather.
- Before connecting your device, check that the voltage corresponds to the one written on the technical plate (230V).

Do not use the appliance near people not wearing safety clothings.

WARNING: high power jets can be dangerous if used improperly. Never direct the jet towards people, animals, electrically powered appliances or towards the appliance itself.

- Never direct the jet towards yourself or other people for cleaning clothes and shoes.
- Use this device only for the functions it is conceived for.
- Disconnect the power supply before carrying out the maintenance operations.
- To disconnect the device, pull only the plug, ever the cable.
- Be careful the supply cable does not touch hot surfaces.
- Never use the device if the feeding cable or its other important parts are damaged for example, safety devices, high pressure flexible tubes, handle with controls.
- To avoid any risks of being electrocuted, do not disassemble it.
- Avoid connecting more powerful appliances to the same electric circuit.
- If an extension cable is needed, make sure it is provided with earth; the plug and the socket must be watertight.
- If the supply cord is damaged, it must be replaced by the manufacturer, its service agent or similarly qualified persons in order to avoid a hazard.

WARNING: unsuitable extension cables can be dangerous.

- Use an outlet provided with earth.
- Do not plunge the device into the water and do not use it in case of rain or snow.
- Do not sprinkle or wash the appliance.
- This appliance can be used by persons with reduced physical, sensory or mental capabilities or lack of experience and knowledge if they have been given supervision or instruction concerning use of the appliance in a safe way and understand the hazards involved.
- Children shall not play with the appliance.
- Children being supervised not to play with the appliance.
- Cleaning and user maintenance shall not be made by children without supervision.
- Keep the appliance out of reach of children when it is energized or cooling down.
- The appliance is not to be used if it has been dropped, if there are visible signs of damage or if it is leaking.
- Liquid or steam not directed towards equipment containing electrical components.
- Do not let the connected device be unguarded.
- Remember to disconnect the device before any cleaning or maintenance operation and at the end of every use.
- Let the device cool down before putting it back.
- Precautions during user maintenance: see "Maintenance of the hose" (pag. 5) and "Routine maintenance" (pag.7).
- Empty and rinse the lower drum after any use.
- For any repair, take the device to an authorised technical service.
- To ensure the safety of the appliance, use original spare parts supplied or approved by the manufacturer only.

WARNING: hoses, accessories and connections are important for the safety of the appliance; use parts recommended by the manufacturer only.

Any intervention carried out by non-authorised make the warranty forfeit. The manufacturer is not to be held responsible for any failure due to incorrect use and maintenance.



WARNING: DANGER OF SCALDING

GENERAL CONTENTS

DESCRIPTION OF THE MACHINE	PAG. 01
MACHINE OPERATIONS.....	PAG. 02
1 st STEP: VACUUM CLEANER LOWER DRUM FILLING.....	PAG. 02
2 nd STEP: WATER TANK FILLING.....	PAG. 02
3 rd STEP: TURNING ON	PAG. 03
4 th STEP: HOSE CONNECTION	PAG. 03
5 th STEP: ACCESSORY STARTING.....	PAG. 04
ACCESSORIES EQUIPPED WITH MACHINE.....	PAG. 05
1 HANDLE WITH HOSE.....	PAG. 05
2 MULTIFUNCTION BRUSH.....	PAG. 05
2A FITTING FOR LIQUID SUCTION.....	PAG. 05
2B FITTING FOR CARPETS.....	PAG. 05
2C UNIVERSAL FITTING	PAG. 05
3 WINDOW CLEANER.....	PAG. 05
4 150 MM. NOZZLE	PAG. 06
4A WINDOW CLEANER FITTING.....	PAG. 06
4B BRISTLE FITTING	PAG. 06
5 STEAM NOZZLE ADAPTER	PAG. 06
6 EXTENSIONS	PAG. 06
7 TRANSPARENT NOZZLE.....	PAG. 06
8 DEGREASER	PAG. 06
ROUTING MAINTENANCE	PAG. 07
OPTIONAL.....	PAG. 08
TROUBLESHOOTING	PAG. 09
AFTER-SALES ASSISTANCE	PAG. 10
SPARE O-RING	PAG. 11

INTRODUCTION

WE THANK YOU FOR CHOOSING THIS PRODUCT MADE IN ITALY.

P-410 IS THE RESULT OF A CAREFUL SEARCH CARRIED OUT BY PEOPLE KEEN ON CLEAN AND INNOVATION AND IT REPRESENTS THE NEWEST PRODUCT AMONG THE NEW-GENERATION MULTIFUNCTION DEVICES.

P-410 CARRIES OUT THE FUNCTIONS OF 4 DIFFERENT HOUSEHOLD APPLIANCES: IT SUCKS, WASHES, DRIES AND SANITIZES. IT IS A SPECIAL, POWERFUL AND ECOLOGICAL MACHINE, IT DOESN'T NEED FILTERS OR BAGS TO BE REPLACED PERIODICALLY AND EXPLOITS THE NATURAL PROPERTIES OF WATER TO ENSURE MAXIMUM HYGIENE AND CLEANLINESS.

WE RECOMMEND READING CAREFULLY THIS MANUAL TO DISCOVER ALL ITS FEATURES AND POTENTIALITIES.

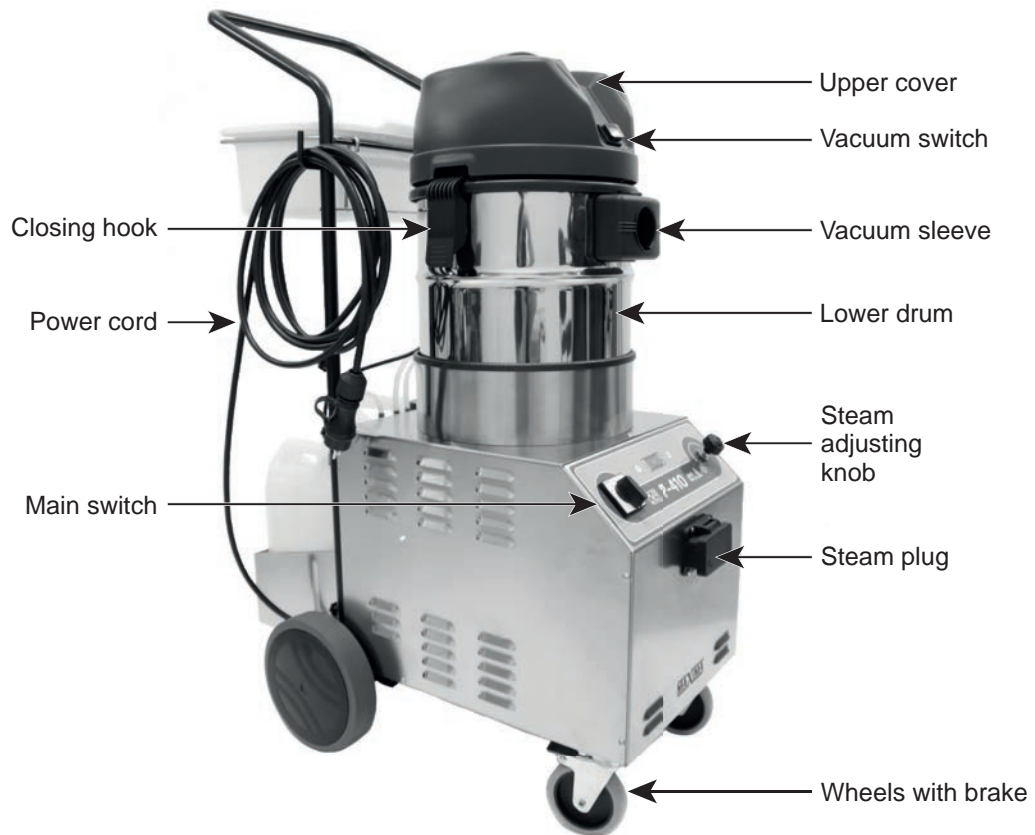
MOREOVER, WE RECOMMEND STRICTLY FOLLOWING THE ADVISES AND CAUTIONS FOR A CORRECT USE IN ORDER TO ENSURE VERY GOOD RESULTS AND SAFETY.



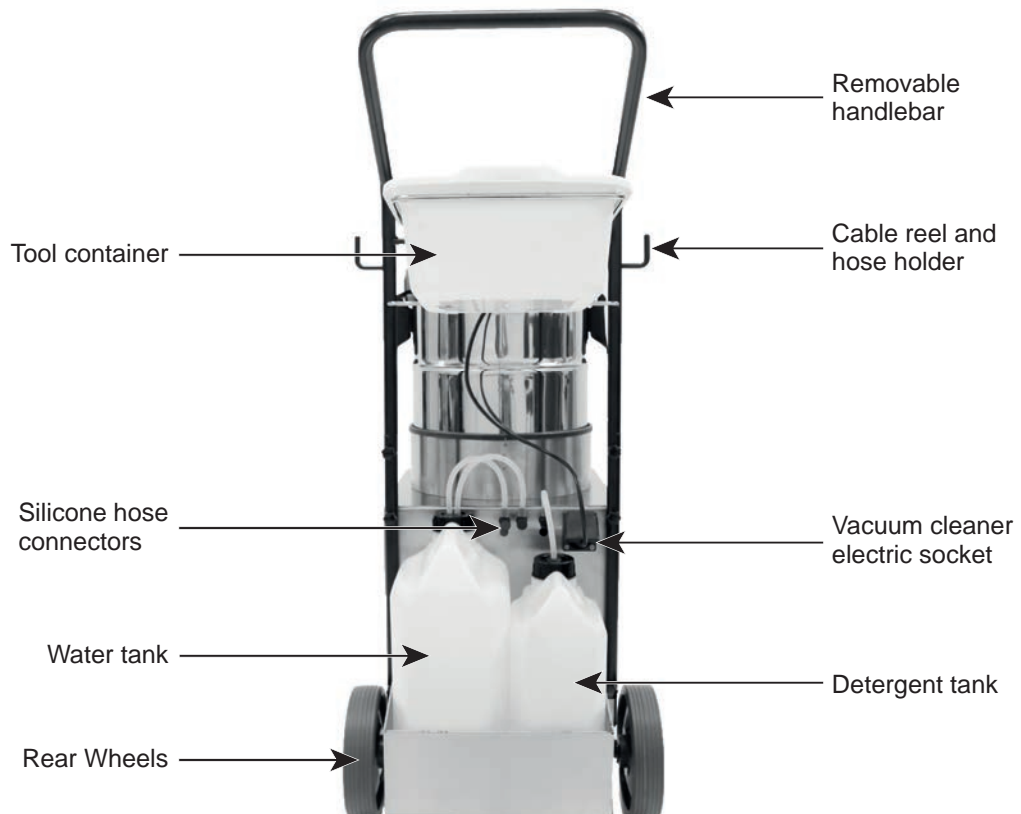
WARNING: READ THE PRESENT MANUAL BEFORE USING THE APPLIANCE.

DESCRIPTION OF THE MACHINE

Front part



Rear part



MACHINE OPERATION

1st STEP: VACUUM CLEANER LOWER DRUM FILLING

- Disconnect the power cord of the vacuum cleaner from the 220V socket of the machine (fig. 1)
- Unhook the closing hooks;
- Lift the upper cover (fig.2);
- Pour about 2 liters of clean water into the lower drum;
- Replace the upper cover and reconnect the power cord.



FIG.1

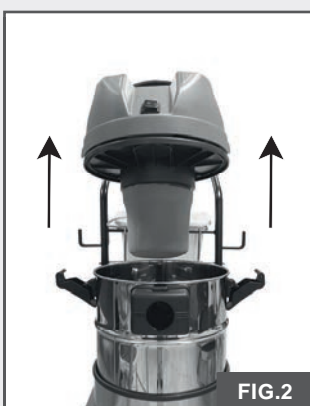


FIG.2

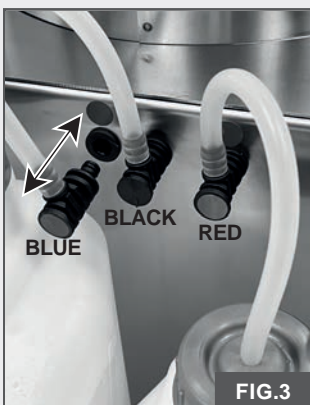


FIG.3



FIG.4

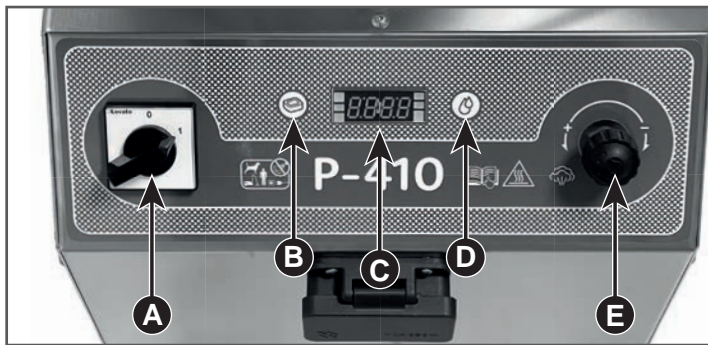


IMPORTANT: to avoid damage to the engine, there must always be water in the lower drum during suction. When the level reaches the maximum, a float will block the suction; in this case, turn off the engine, empty the drum and reinsert 2l. Of clean water (fig. 2).

2nd STEP: WATER TANK FILLING

- Disconnect the 3 silicone hoses from the machine by pulling the plastic connectors (fig.3)
- Remove the 2 tanks and fill: the 10 l one exclusively with water and the 5l one with a suitable diluted detergent.
- Reposition the 2 tanks in the housing: 10 l. left and 5l. to the right. (fig. 4)
- Reconnect the 3 pipes to the machine paying attention to the corresponding colors: blue on the left, black in the center and red on the right (fig.3)

NOTES: Do not use distilled water. From time to time check the level of water and detergent in the two tanks; the machine detects the total lack of water to protect the resistance, but in order not to reduce the life of the pump it is essential not to completely empty the tanks.



LIST OF THE PANELS FUNCTIONS

- A. Main switch
- B. Detergent quantity adjustment
- C. Display
- D. Water / detergent function selector and water quantity adjustment
- E. Adjustment knob +/- output steam

3rd STEP: TURNING ON



- Connect the power cord of the vacuum cleaner to the machine (fig. 1)
- Connect the power cable of the machine to a 220 Volts -16 A socket equipped with an earthed socket.
- Set the vacuum cleaner switch to "1" (fig. 5)
- Place the machine switch on "1" (fig. 6), the display will turn on and the word "HEAT" will appear. After about 8 minutes the boiler will be ready to work and the display will show the temperature.
- The steam must be adjusted according to the surface to be treated using the knob (fig.7).



NOTES: If the water in the tank runs out, the message "H2O-c" will appear on the display, at the same time the steam supply will stop; in this case, turn off the machine, fill the water tank (2nd step) and turn it back on (3rd step).

DETERGENT / WATER JET SELECTION: press button D to choose the desired function, the words "CHEM" will appear on the display to indicate that the Detergent function has been selected and "HjEt" for the Water jet function. The last selected function will remain memorized also for the next start-up of the machine.

DETERGENT QUANTITY ADJUSTMENT: hold down button B, the display will show the adjustment values from minimum to maximum in sequence, once the desired number is displayed, release button B and immediately press it quickly to memorize the choice made.

WATER QUANTITY ADJUSTMENT (HYDRO-JET): hold down button D, the display will show the adjustment values from minimum to maximum in sequence, once the desired number is displayed, release button D and immediately press it quickly to memorize the choice made.



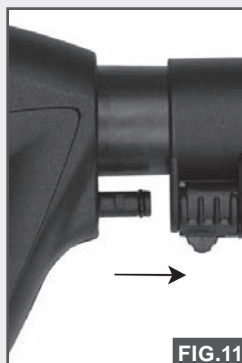
The settings chosen will remain memorized even for the next start-up of the machine.



4th STEP: HOSE CONNECTION

- To connect the steam plug, lift the flap that covers the socket (fig.8), insert the plug fully, then close the flap. To disconnect the plug, lift the cover, press the red cursor and pull the plug.
- For the suction intake (fig.9) it is sufficient to insert it fully into the sleeve and to disconnect it, press the slider into the sleeve and pull the nozzle.

BEFORE WORKING WITH THE MACHINE, MAKE SURE THAT EVERYTHING IS WELL CONNECTED.



5th STEP: ACCESSORY STARTING

- All the accessories carry out the double function of suction and steam. They fit in directly on the handle or on the extensions.
- Move the ring nut to open position and keep it open (fig.10).
- Fit in the extension hose or the accessory (fig.11).
- Move the ring nut to close position. Release the spring wheel for the hose extension.

CONTROLS ON HANDLE

- **SUCTION:** press the button on the right above the handle (B) once to start the suction motor and once to switch it off (fig.12). Both starting and stopping the engine are of the "ramp" type so wait a couple of seconds before obtaining maximum power or switching off.

NOTE: The suction button (B) must not be operated at the same time as the other controls (A and C).

e.g: First start vacuum then spray steam.

- **WATER JET AND DETERGENT:** press the switch on the left above the handle (A) for dispensing both water + steam and detergent + steam (N.B: dispensing will continue until it is intentionally interrupted by the user). To stop dispensing, press the switch (A) again.
- **STEAM:** hold down the button located under the handle (C) for steam output and release it for interruption (fig.12).



FIG.12

- A. Detergent and water switch
- B. Suction button
- C. Steam button
- D. Steam button lock



ATTENTION: DO NOT USE STEAM OR WATER JETS ON ELECTRICAL APPLIANCES IN OPERATION OR UNDER VOLTAGE!

ACCESSORIES SUPPLIED WITH THE MACHINE

1



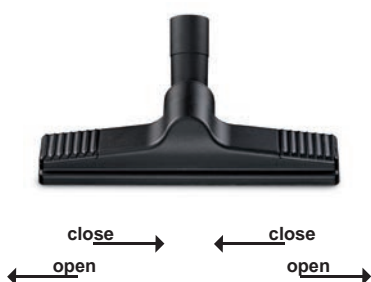
1. HANDLE WITH HOSE

- A. Detergent / water jet switch
- B. Suction button
- C. Steam button
- D. Steam button lock
- E. Handle
- F. Suction intake
- G. Steam plug

MAINTENANCE OF THE HOSE

After every use we recommend rinsing the hose by sucking one/two litres of water from a basin to prevent the dirt from settling on the internal walls. Then, hook it, so that it can get dry.

2



2. MULTIFUNCTION BRUSH

It is equipped by an articulation which allows it to turn 360°. This brush can clean areas difficult to be reached (under the furniture and the beds, on high cupboards, etc.) and various kind of floor, carpets, etc.

To use the desired fitting on the brush, just insert it and by keeping it pressed, move the sliders inwards (fig. 2). To remove the fitting, move the sliders outwards.

2A



2A. FITTING FOR LIQUID SUCTION

It is fitted to clean floors, plastic coatings, marble, etc..

Steam the surface to be cleaned and then suck; the result is a perfectly clean and dry surface.

2B



2B. FITTING FOR CARPETS

The rounded shape allows sliding and cleaning carpets and fitted carpets more easily.

2C



2C. UNIVERSAL FITTING

It can be used as vacuum cleaner on floors, tiles, plastic coatings.

3



3. WINDOW CLEANER

The window cleaner is particularly suitable for the cleaning of windows and mirrors.

For the use refer to point 4A.

NOTE: in winter the windows must be previously warmed by using the accessory at a distance of 10/15 cm. before starting cleaning.

4



4. 150 MM. NOZZLE

It is a brush on which the following fittings can be assembled:

4A



4A. WINDOW CLEANER FITTING

Ideal to clean "English" windows. For a correct use we recommend warming the accessory by keeping the steam push button pressed for some seconds and steaming in the air. Then proceed with the cleaning.

It is possible to steam and suck at the same time or separately. We recommend using the window cleaner from the top to the bottom by keeping it well pushed on the window.

4B



4B. BRISTLE FITTING

It can be used to clean sofas, armchairs, seats, etc.

For a correct use steam and suck by keeping pressed the brush against the surface so that the dirt can be easily removed.

5



5. ADAPTER FOR THE STEAM LANCE

5A. Lance

5B. 80mm nozzle

5C. Bristle brush pekalon 30mm

5D. Bristle brush brass 30mm

5E. Bristle brush nylon 60mm

5F. Extension for steam lance

Particularly recommended to clean shower boxes, grills, fly screens and the spaces between the tiles etc. Ideal also for the defrosting of freezers or refrigerators.

6



6. EXTENSIONS

Essential to clean floors, washable walls or high windows. They can be used combined with any other accessory.

7



7. TRANSPARENT NOZZLE

To wash rugs, carpets, upholstery ...

8



7. DEGREASER

Multiuse concentrated liquid that is safe and effective for the most ingrained dirt..

ROUTINE MAINTENANCE

CLEANING THE FILTERS

The constant and correct cleaning of the filters helps to keep the appliance clean and in perfect efficiency. Observe the following instructions:

- Disconnect the power cord of the vacuum cleaner from the machine's 220V socket
- Unhook the closing hooks;
- Lift the top cap;
- Remove the sponge filter and wash it with soap and water (fig.13);
- Allow the filter to dry and reposition it correctly;
- Replace the top cap and reconnect the power cord.



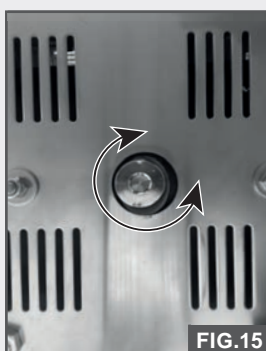
GENERAL NOTES

The float valve must be kept clean and periodically checked. Ensure that the float is not damaged or obstructed by anything that may stop it from rising.

DO NOT WIPE PLASTIC PARTS WITH SOLVENT. Solvents such as gasoline, thinner, benzene, carbon tetrachloride, and alcohol may damage and crack plastic parts. Wipe plastic parts with a soft cloth lightly dampened with water.



NOTE: If you wish to use the vacuum cleaner as for dry suction, the washable cartridge filter must be purchased separately (Fig. 14) and fit it instead of the sponge filter.



CLEANING THE BOILER

It is advisable to empty the boiler once a month to eliminate most of the residue (limescale, etc.) and we recommend to wash the boiler with not too aggressive acids at an authorized service center, once every 6 months. To carry out these two operations it is necessary to act on the emptying cap which is positioned under the machine, without tilting it and with the **BOILER OFF** (Fig. 15) and cold.



CLEANING OF THE TANKS

It is advisable to wash both tanks (cans) periodically with water (Fig. 16).

If you do not plan to use the machine for a prolonged period (eg holidays), we recommend you to leave the cans empty.

OPTIONAL

1



1. KIT SANITATION MAXI

Equipped with:

- 5m flexible steam hose
 - aluminum steam extensions
 - steam mop base with joint
 - ultra microfiber mop
 - nebulizer lance with tank
-

2



2. TURBOVAPOR

Excellent for all types of floors, both dry and steam use, it is a vacuum-steam electric nozzle, battery powered with interchangeable rollers.

3



3. BIG TRANSPARENT NOZZLE

For washing and drying large carpets, rugs and upholstery.

4



4. METALLIC LONG STEAM LANCE

Steaming lance with an extra powerful concentrated jet for technical uses.

5



5. WINDOW CLEANER WITH BRISLE 360°

Washing - brush - dryer accessory ideal for large windows and persistent dirt, with swivel joint.

6



6. EXTENDABLE HOSE

Dust/liquid vacuum hose which extends from 1 m to 6 m.

TROUBLESHOOTING

Sometimes problems arise from causes which can be easily removed by carrying out simple checks.

PROBLEM	CAUSE	SOLUTION
Insufficient suction	<ul style="list-style-type: none"> · The filter is dirty or clogged · The hose is clogged · The lower drum is full 	<ul style="list-style-type: none"> · Clean the filter · Disconnect the hose and remove dirt · Empty the drum and restore the minimum level with clean water
The motor is noisy	The lower drum is full	Empty the drum and restore the minimum level with clean water
When the boiler is ready, steam does not come out	Adjustment is low	Increase the output power
When the boiler is ready, steam does not come out and the display shows the message H2o	Water has finished in the tank	Fill the tank with water only
The extension hoses or the accessories loosen easily	The fastening ring nut is not in its correct position	Fix the fastening ring nut in its proper position
The extension hoses or the accessories are not coupled easily	<ul style="list-style-type: none"> · Gaskets are not lubricated · Gaskets are damaged · The fastening ring nut is not in its correct position 	<ul style="list-style-type: none"> · Lubricate gaskets by using teflon grease or hand cream · Replace gaskets with those supplied · Put the fastening ring nut in open position
Light water/steam escape from the couplings (of: accessories, extension hoses, hose)	Gaskets are damaged	Replace gaskets with those supplied. Lubricate gaskets by using teflon grease or hand cream
The controls on the hose handle do not respond	The plug unit of the hose has not been connected properly	Connect the plug unit until the door is properly closed
The hose loosens from the machine	The plug unit of the hose has not been connected properly	Connect the plug unit until the door is properly closed

If, after carrying out these checks, the appliance does not work, please contact the Technical Assistance Service.

WARRANTY AND TECHNICAL SERVICE



TECHNICAL SHEET

- Electric absorption : 15 Amp - 3500W
- Suction: 2400 MM
- Motor power: 1200 - 1400 WATT
- Max size: 79,5 X 46 X 109 CM
- Min size: 74,5 X 46 X 58 CM
- Weight: 32 Kg
- Steam pressure: 10 BAR
- Boiler power: 3500 W
- Boiler volume: 3,5 L
- Refill system: AUTOMATIC
- Steam ready: 8 MIN
- Water tank for steam: 10 L
- Detergent tank: 5 L
- Dirty water tank: 15 L
- Power Jet enriched steam: YES
- Device stopping the circuit at tank and boiler level
- Thermostat
- Thermofuse
- Pressure switch
- Safety valve 12 bar
- Low voltage control

For any malfunction, please contact your dealer or the Technical Service.

Never repair your device on your own. The regulations at the basis of its manufacture might break and consequently the warranty might forfeit. The warranty forfeits also when any intervention is carried out by non-authorised staff.

CONDITIONS

The device sold is guaranteed according to the Law for possible manufacture failures. During this period, the faulty components are replaced free, if the failure is not caused by collisions, falls, fires, short circuits or by an improper use. The non-working device or the faulty parts are to be sent carriage free to our Company or to the authorised Technical Service. We send the repaired components back carriage paid to the purchaser address.

INFORMATION FOR THE USERS ON THE DISPOSAL OF OUTDATED ELECTRIC AND ELECTRONIC DEVICES (FOR PRIVATE FAMILY UNIT)

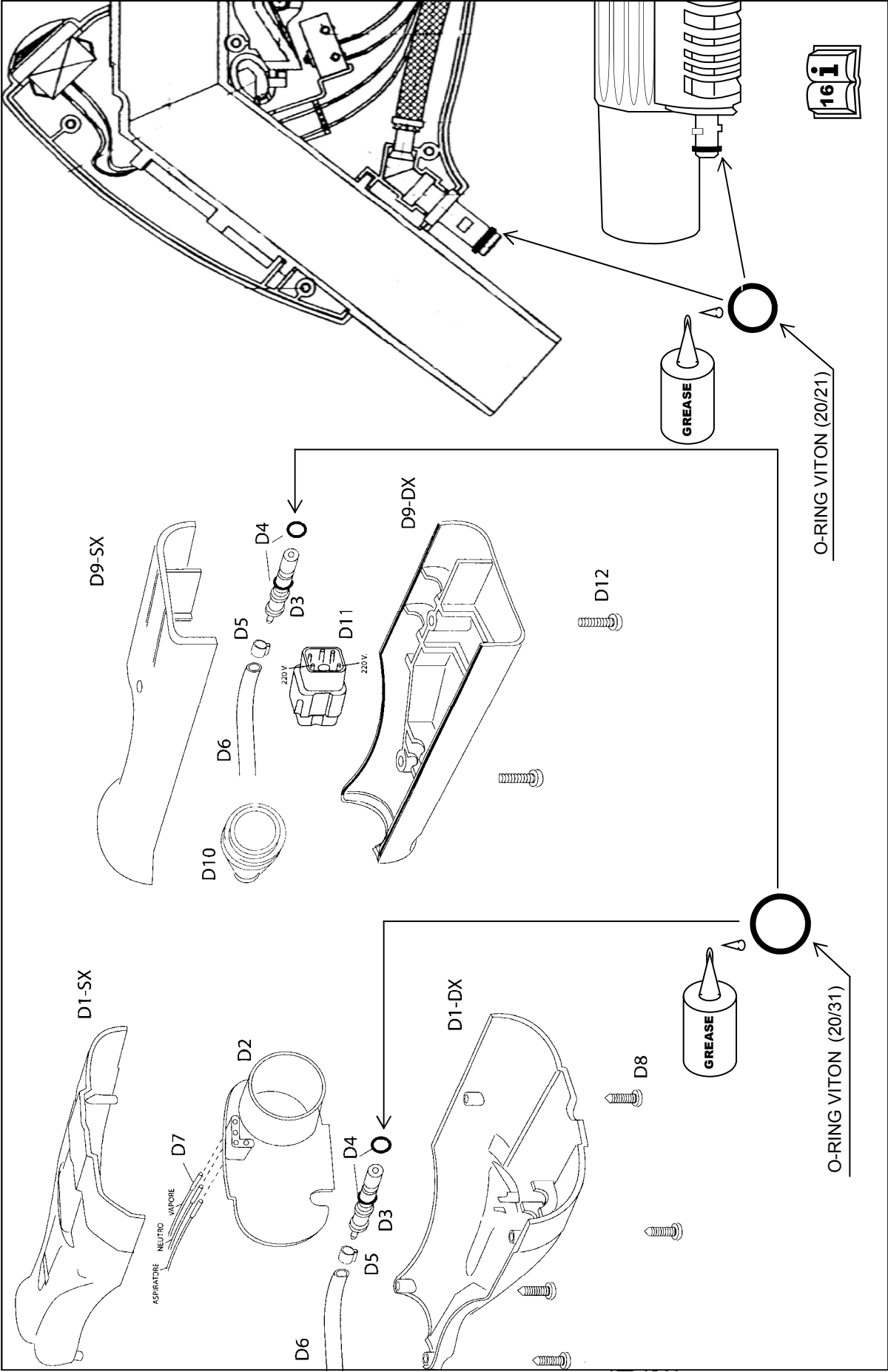


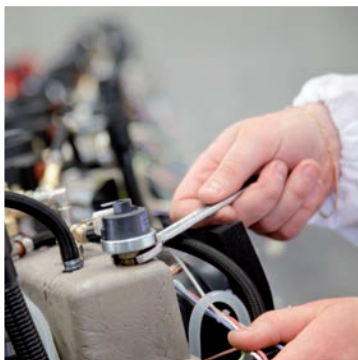
This symbol on the products and/or on the documents means that the electric and electronic products used are not to be disposed of with generic household waste. For a correct treatment, reutilization and recycling take these products to the collecting points, where they are accepted free. Alternatively, in some Countries the products could be given back to the local dealer when purchasing another equivalent product. A correct disposal of this product will allow saving precious resources and avoid possible negative effects on the human health and on the environment. For further details, contact the local authority or the nearest collecting point. In case of wrong disposal, penalties may be applied according to the Local Law. For the Companies of the European Union: if you wish to dispose of electric and electronic devices, contact the dealer or the supplier for further details.

Information about disposal in Countries not belonging to the European Union. This symbol is valid only in the European Union. If the device should be disposed of, contact the local authority or the dealer and ask for information about a correct disposal.

**WARNING:
DANGER OF BURNS**

SPARE O-RING





The entire range is exclusively made in Italy, in full respect of EC directives, with Italian components, to ensure maximum reliability, efficiency and durability.

Genuine Made in Italy.

ADVANCED
SOLUTIONS

MAXIMA
ADVANCED SOLUTIONS

MAXIMA SRL - VIA ENRICO FERMI, 16
31040 GORGO AL MONTICANO - ITALY
TEL +39 0422 749 867
FAX +39 0422 809 442
WWW.MAXIMAITALIA.COM

